

**Your Guide to**

*Winthrop University*







# Winthrop Quick Facts



46

UNDERGRADUATE PROGRAMS

4,406

UNDERGRADUATE STUDENTS

1,170

GRADUATE STUDENTS

20

AVERAGE  
CLASS SIZE

100+

CLUBS AND  
ORGANIZATIONS

23

GRADUATE  
PROGRAMS

2

ROTC PARTNERSHIP  
PROGRAMS  
(AIR FORCE  
& ARMY)

95%

UNDERGRADUATES  
RECEIVING FINANCIAL AID

12:1

STUDENT TO  
FACULTY RATIO

44%

MINORITY  
POPULATION

100-acre

MAIN CAMPUS

300-acre

RECREATIONAL AND RESEARCH  
COMPLEX

400+

STUDENTS PARTICIPATING IN  
UNDERGRADUATE RESEARCH  
ACROSS ACADEMIC DEPARTMENTS

91%

UNDERGRADUATE  
STUDENT PLACEMENT RATE UPON  
GRADUATION

PUBLIC  
COEDUCATIONAL  
LIBERAL ARTS  
UNIVERSITY



ROCK HILL,  
SOUTH CAROLINA  
FOUNDED: 1886



## Application Requirements

Undergraduate first-year student applications are online. A completed freshman application will include the following criteria:

1. A non-refundable application fee of \$50. Online applicants pay the fee to a third party vendor upon submission of the application.
  - a. Application fee waivers are available for students in the Teacher Cadet program or those with an ACT, SAT, or NACAC waiver.
2. High School Transcript. Admissions can use an unofficial copy for the initial admission decision. A student can upload, e-mail, fax or mail a copy to the Office of Admissions. Winthrop's fax number is 803/323-4952. An official final high school transcript is required for all admitted students upon graduation.
3. Winthrop is test optional. Students can decide whether they want to submit ACT or SAT test scores with their application. In lieu of the test scores, applicants are required to complete a short essay. Students who choose to submit test scores will have them evaluated as part of the admission decision. Winthrop's SAT code is **5910** and ACT code is **3884**.

Note: Winthrop also accepts the Common Application.

### common app

**Freshman Class Stats**

Average High School GPA: **4.04**

Average GPA SC: **4.09** weighted

Average GPA out-of-state: **3.48**

Average SAT of enrolled freshman: **1053**

Average ACT of enrolled freshman: **22**

The middle **50%** of enrolled freshman scored between **950-1150** on the SAT

The middle **50%** of enrolled freshman scored between **19-25** on the ACT





## Primary Decision Criteria

1. High school performance including grades and level of coursework
2. Completion of high school course prerequisites as set by the South Carolina Commission on Higher Education
3. Standardized test scores, if not applying as test optional
4. Essay, if applying test optional
5. Optional: Letters of recommendation, resumes, personal statements, extracurricular activities and community service

## Required High School Courses

- 4 units of English
- 4 units of math (Algebra I, Algebra II, Geometry and an advanced math beyond Algebra II)
- 3 units of laboratory science (2 units must be selected from Biology, Chemistry, Physics or Earth Science. The third unit must be from the same field as one of the first two in which biology, chemistry, physics or earth science is a prerequisite.)
- 2 units of the same foreign language
- 3 units social science (US History, Government/Economics are both required)
- 1 unit fine arts
- 1 unit PE or ROTC
- 2 units of electives
- Total: 20

## Application Deadline

### Early Notification

Students must submit an application and all required materials by November 1. Decision day is December 1.

### Regular Notification

Students must submit an application and all required materials by February 1. Decision day is February 15.

Students who apply after February 1 will be reviewed and notified monthly beginning March 1.

All applications are non-binding.





## Decision Notification Timeline

Students will receive an e-mail when Winthrop has received their information. Updated information on the status of their application can be viewed at [apply.winthrop.edu/status](http://apply.winthrop.edu/status).

## Enrollment Deposit

An enrollment fee of \$300 is required to reserve a space in the fall entering class. The fee is refundable. Students are able to request an extension through their admissions counselor.

[www.winthrop.edu/admissions/enrollment-fee-admissions-deposit-instructions.aspx](http://www.winthrop.edu/admissions/enrollment-fee-admissions-deposit-instructions.aspx)

## Enrollment Checklist

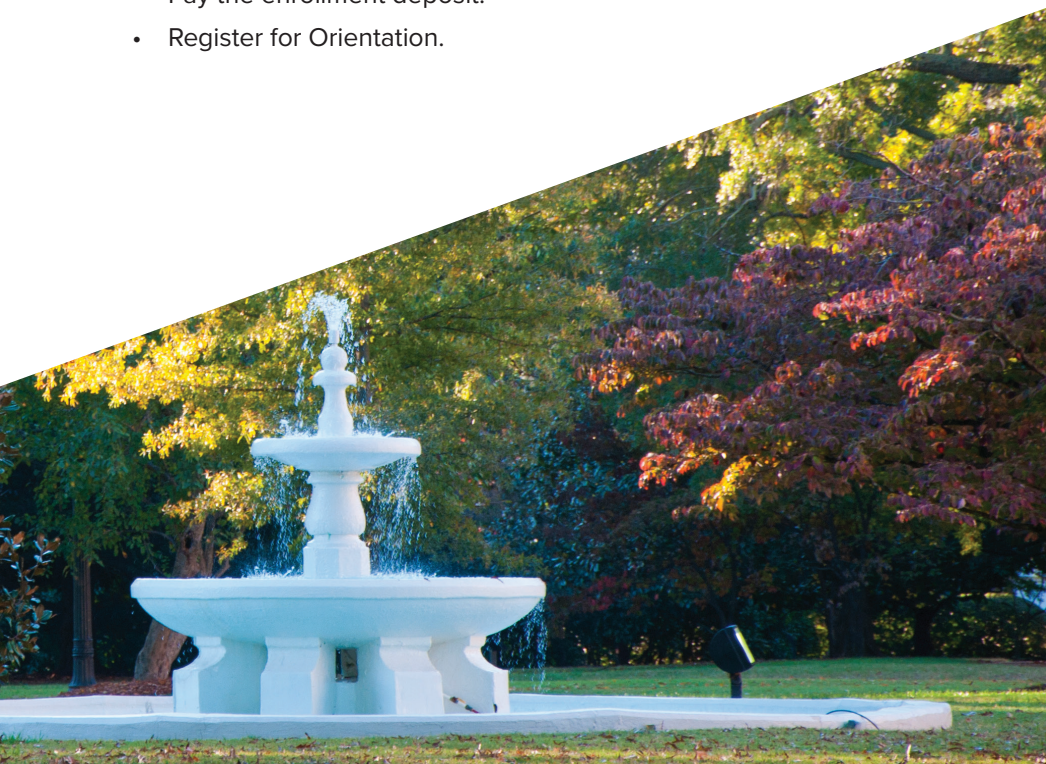
After receiving the admission decision, students should continue to check their enrollment checklist via their Admissions Portal ([apply.winthrop.edu/status](http://apply.winthrop.edu/status)). The Admissions Portal is where students will create their Wingspan account, pay their enrollment deposit, register for Orientation and complete their SC Residency form.

Once a student has created their Wingspan student account, they will be able to check their Financial Aid package, complete the Eaglesnest Housing Application and access their Winthrop e-mail address. Students interested in attending Winthrop University should complete all of the tasks listed prior to the start of their first semester.

## Application Status

Once a student has been admitted, the student can log on to the Admissions Portal to:

- View what application materials Winthrop has received.
- View their admissions decision.
- Create their Wingspan account.
- Pay the enrollment deposit.
- Register for Orientation.







## Academic Merit Scholarships

All first-time freshmen admitted to Winthrop will be considered for a merit scholarship. No separate application is required. The Office of Admissions must receive a completed admissions application by February 1 for scholarship consideration. A completed application includes an application form, application fee, high school transcript and SAT/ACT scores OR test-optional form and essay. Students submitting applications and scores after February 1 will be considered for scholarships if funds are available.

## Community Service Scholarship

Winthrop offers scholarships to incoming freshmen interested in committing to service and enrichment opportunities within the community each year. Incoming freshmen must complete an application, submit an essay describing their prior community service involvement and explain why they feel it is important by the April 15 scholarship deadline. Information and the application are available online at

[www.winthrop.edu/cce/close-scholars.aspx](http://www.winthrop.edu/cce/close-scholars.aspx).

## RaiseMe Micro Scholarships

Through RaiseMe, students can earn “micro-scholarships” (performance-based scholarships) from Winthrop University for each year of their academic and extracurricular achievements beginning in ninth grade. Counselors are using this free program to motivate students, improve outcomes and reinforce the guidance they are already giving. RaiseMe can help your students get a head start on their college search and begin earning scholarships.

[www.raise.me/educators](http://www.raise.me/educators).

[www.raise.me/join/winthrop](http://www.raise.me/join/winthrop)

## Tuition and Fees

Full-Time In-State annual	
Tuition and Fees:	\$16,654
Housing and Meals:	\$10,200
Total Cost:	\$26,854

Full- Time Out-of-State annual	
Tuition and Fees:	\$31,312
Housing and Meals:	\$10,200
Total Cost:	\$41,512

(Costs are estimates and depend on student preferences or selections and are subject to change each academic year.)

[www.winthrop.edu/finaid/coa](http://www.winthrop.edu/finaid/coa)

## Financial Aid

Winthrop has a priority deadline of November 1 for incoming freshmen to file the Free Application for Federal Student Aid (FAFSA) to be considered for scholarships and need-based aid. The 2022-2023 Free Application for Federal Student Aid (FAFSA) is available on October 1, 2021. Students use their 2020 income tax return information to complete the 2022-2023 FAFSA. Since funding is awarded on a first-come, first-served basis, students are encouraged to submit their FAFSA application as soon as possible.

To receive priority consideration for need-based aid please submit the completed FAFSA by the PRIORITY DEADLINE of November 1, 2021. In order for Winthrop University to receive your processed FAFSA, you must list our federal code (003456) on the application.

[www.winthrop.edu.finaid](http://www.winthrop.edu.finaid)



## Residence Life

Winthrop University offers eight residence halls in traditional, suite and apartment style. All students are required to live on campus for the first two years unless they live within a 50-mile radius of campus, are married, or are a non-traditional student.

New students will receive a housing application packet through the mail in the spring after admission into Winthrop University. The packet includes instructions on how to apply for housing online using the Eaglesnest link in their Wingspan account.

[www.winthrop.edu/reslife](http://www.winthrop.edu/reslife)

## Visit the Campus

Students interested in attending Winthrop University are encouraged to visit campus to determine if Winthrop is a good fit. Winthrop offers weekday campus tours Monday through Friday at 10:30 a.m. and 2:30 p.m. Winthrop also offers special events and Open Houses throughout the year. Students can explore Winthrop's campus through our virtual tour at [www.winthrop.edu/#virtualtour](http://www.winthrop.edu/#virtualtour).

[www.winthrop.edu/admissions/visit](http://www.winthrop.edu/admissions/visit)





## NCAA Athletics

Winthrop offers 16 Division I athletic teams.

Big South Conference

Men's: Baseball, Basketball, Cross Country, Golf, Soccer, Track and Field (indoor, outdoor)

Women's: Basketball, Cross Country, Golf, Lacrosse, Soccer, Softball, Track and Field (indoor, outdoor), Volleyball

Co-Educational: E-Sports

### Recruitment Questionnaire

Students interested in playing at the Division I level at Winthrop University are encouraged to complete the recruitment questionnaire for their specific sport.

These questionnaires are available on the Athletics' website under each individual sport.

[www.winthropeagles.com](http://www.winthropeagles.com)

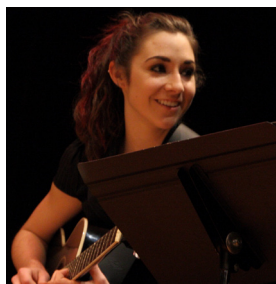


## NCAA Clearinghouse

All student athletes interested in playing a sport at the college level need to register with the NCAA Eligibility Center.

[www.ncaa.org/student-athletes/future](http://www.ncaa.org/student-athletes/future)





## The Arts at Winthrop

Winthrop University is renowned for its visual and performing arts programs. Winthrop is one of only 37 universities in the U.S. and the only institution in South Carolina with all of its undergraduate and graduate programs (theatre, dance, music, fine arts and design) nationally accredited.

Winthrop University offers degrees in theatre, dance, music, fine arts and design, as well as teacher certification in art, music, theatre and dance.

[www.winthrop.edu/cvpa](http://www.winthrop.edu/cvpa)

### Auditions

The Departments of Music and Theatre and Dance hold auditions/interviews for placement and scholarship eligibility.

### Portfolios

The Departments of Fine Arts and Design hold portfolio reviews for scholarships eligibility.

### Open Houses

The College of Visual & Performing Arts hosts Open Houses to provide students with an in-depth look at the College's many programs with facility tours and information sessions led by faculty members.

Talented students interested in learning more about Winthrop's arts programs should contact Arts Recruitment Coordinator Paula Garofalo at [garofalopl@winthrop.edu](mailto:garofalopl@winthrop.edu).



## The Honors Program

The Honors Program is a great way for students to further their college education with more opportunities to dive deep into advanced topics and work with passionate faculty in smaller classroom settings. Students in this program will participate in more rigorous coursework, complete a service learning project and write an Honors Thesis prior to graduating.

### The Benefits

Honors Program students benefit from priority course registration, smaller class sizes, an additional academic advisor and apartment-style housing opportunities starting in their freshman year.

### The Application

Qualified students will receive an invitation to apply to the Honors Program after they have been admitted to Winthrop University. The application is comprised of the Honors Application Form and a one-page essay on the specified topic.

### The Requirements

Students wanting to participate in the Honors Program must complete the program's application. Freshman admission into the Honors Program is based upon the applicant's high school GPA, test scores (unless applying test optional) and essay. All admitted freshmen with a high school GPA of 4.25 or above will be invited to apply for Honors Program admission. Students can also apply for the program after enrolling at Winthrop and maintaining a 3.3 GPA in their cumulative college coursework.

[www.winthrop.edu/honors](http://www.winthrop.edu/honors)







## The Leap Program

The Learning Excellent Academic Practices (LEAP) Program is designed to assist students in making a successful transition from high school to college. The program provides academic guidance and support to a select group of freshman students at Winthrop University. LEAP has an excellent track record for promoting academic success. The program includes structured study halls, tailored tutoring and access to a personal success coach.

[www.winthrop.edu/leap](http://www.winthrop.edu/leap)

## Eagle STEM

The Winthrop Eagle STEM Scholars Program seeks motivated, goal-oriented, high-caliber students who demonstrate excellent proficiency in science and mathematics. This student-centered program provides individual and peer support, resources for academic success and an unmatched level of access to scientific research throughout their undergraduate experience. Eagle STEM Scholars may also be considered for scholarships based on their participation in the program. This program starts the summer before a student's freshman year and continues on to their senior year with countless research opportunities in between.

The Eagle STEM Scholars Program is for college students:

- From underrepresented minority groups, who are first generation and/or who have financial need.
- Interested in directly matriculating to Ph.D. programs in biomedical science, bioengineering, biology, chemistry, biochemistry, math, computer science or environmental science.
- Nominated for the program most typically by their high school administrators, counselors and teachers.
- Who were motivated and well-prepared high school seniors.

[www.winthrop.edu/eaglestem](http://www.winthrop.edu/eaglestem)



## Accounting Mentorship and Professional Development

The Accounting Mentorship and Professional Development (AMPD) program is for students who are underrepresented in the professional accounting field. This competitive program provides a significant leg up to students who dream of a career as certified professional accountants. Upon completion of the AMPD program, students not only are prepared to take the CPA exam, but also have the advantages that come with discipline-specific mentors, internships and other professional development opportunities. The program provides scholarships of up to \$2,000, paid internships and mentoring for selected students each academic year. This program begins their freshman year and continues until they graduate from Winthrop.

[www.winthrop.edu/cba/accounting/ampd](http://www.winthrop.edu/cba/accounting/ampd)

## Teaching Fellows

Teaching Fellows is a program established and operated by CERRA (Center for Educator Recruitment, Retention, & Advancement) in conjunction with Winthrop University and other affiliated South Carolina higher education institutions. Teaching Fellows participate in advanced enrichment programs at Teaching Fellows Institutions, professional development opportunities during the summer months, involvement with communities and businesses throughout the state and receive up to \$6,000 in yearly scholarships for four years while they complete a degree leading to teacher certification.

Teaching Fellows are chosen through a competitive application and interview process during a student's senior year of high school. Applications become available in September and the deadline to apply is December 1. Award notifications are sent in the early spring.

[www.cerra.org/teaching-fellows-application.html](http://www.cerra.org/teaching-fellows-application.html).

## Advanced Placement (AP) Credit

To assist students in achieving their academic goals, Winthrop awards Advanced Placement (AP) credit for scores of three or above on Advanced Placement tests (taken in conjunction with designated high school AP classes).

[www.winthrop.edu/admissions/apib](http://www.winthrop.edu/admissions/apib)

## International Baccalaureate (IB) Credit

Winthrop awards advanced college course credit for scores of four or above on higher level International Baccalaureate (IB) examinations. A minimum score of five is required to receive credit for Math with Further Mathematics and Computing Studies. Students may receive up to 30 hours of course credit for scores of four or above on higher level and selected standard level examinations.

[www.winthrop.edu/admissions/apib](http://www.winthrop.edu/admissions/apib)





## Dual Enrollment

Winthrop University provides an opportunity for academically strong secondary students to take college courses for either credit at the high school and college level OR start building college credit for use upon entering a post-secondary institution.

### Eligibility Requirements

Rising high school junior or senior

Student must complete an online application

3.0 GPA on the South Carolina Uniform Grading Scale

ACT and SAT scores are optional

[www.winthrop.edu/admissions/dual-enrollment.aspx](http://www.winthrop.edu/admissions/dual-enrollment.aspx)

## Winthrop University and York Technical College Bridge Program

Students who plan to transfer to Winthrop University are encouraged to consider the advantages of the Winthrop Bridge Program with York Technical College. Benefits include academic advising, academic support services and admission to athletic events and the fitness center. For more information, e-mail [admissions@winthrop.edu](mailto:admissions@winthrop.edu) or call 803/323-2191.

### Transfer Pathways

Many students elect to begin their studies at another college or university and transfer to Winthrop to earn an undergraduate degree. The Office of Admissions will process transfer applicants for the summer, fall or spring semesters.

\*Students are classified as a transfer applicant if they enrolled in another college or university the fall after graduating from high school.

[www.winthrop.edu/admissions/transfer/pathways.aspx](http://www.winthrop.edu/admissions/transfer/pathways.aspx)

### Transfer Tuesdays

Winthrop offers Transfer Tuesday events several times a year to help students learn about the transfer process and make a smooth transition to Winthrop.

[www.winthrop.edu/admissions/transfer-tuesday.aspx](http://www.winthrop.edu/admissions/transfer-tuesday.aspx)







## Winthrop Majors

### APPLIED SOFTWARE ❖

#### ART: FINE ◆

#### ART: LIBERAL ART EMPHASIS •

Teacher Certification (PK-12)

#### ART HISTORY ◆

#### BIOLOGY • ◆

Biomedical Research  
Conservation

Medical Technology

Teacher Certification (9-12)

#### BUSINESS ADMINISTRATION ◆

Accounting ◆

Computer Information Systems

Economics ◆

Entrepreneurship ◆

Finance ◆

Health Care Management ◆

Human Resource Management ◆

International Business

Management ◆

Marketing ◆

#### CHEMISTRY • ◆

ACS Chemistry

ACS Biochemistry

Engineering-Physics

Forensic

Business

#### COMPUTER SCIENCE ◆

#### CYBERSECURITY

#### DANCE ◆ •

Teacher Certification (PK-12)

#### DATA SCIENCE

#### DESIGN

Experience Design

Graphic Design

Illustration

Interior Design

#### DIGITAL INFORMATION DESIGN ◆

Digital Commerce

Digital Mass Media

Interactive Media

Web Application Development

#### EARLY CHILDHOOD EDUCATION

(PK-3 Certification)

#### ECONOMICS ◆

#### EDUCATIONAL STUDIES •

#### ELEMENTARY EDUCATION •

(2-6 Certification)

#### ENGLISH • ◆

Teacher Certification (9-12)

#### ENVIRONMENTAL SCIENCES

#### ENVIRONMENTAL STUDIES

### EXERCISE SCIENCE

Athletic Training

#### HISTORY • ◆

#### HUMAN DEVELOPMENT AND

#### FAMILY STUDIES ◆

Child and Adolescent Studies

Child and Family Services

#### HUMAN NUTRITION ◆

Health Promotion

Dietetics

#### INDIVIDUALIZED STUDIES

#### INTEGRATED MARKETING

#### COMMUNICATION

#### MASS COMMUNICATION

#### MATHEMATICS • ◆

Teacher Certification (9-12)

#### MIDDLE LEVEL EDUCATION

(5-8 Certification)

English/Language Arts

Mathematics

Science

Social Studies

#### MODERN LANGUAGES

French • ◆

Teacher Certification (K-12)

Spanish • ◆

Teacher Certification (K-12)

#### MUSIC: LIBERAL ART EMPHASIS ◆

Music Technology ◆

#### MUSIC EDUCATION

(PK-12 Certification)

Choral

Instrumental

#### MUSIC PERFORMANCE

Music Composition

Instrumental/Vocal

#### PHILOSOPHY AND RELIGIOUS STUDIES ◆

Philosophy ◆

Religious Studies ◆

#### PHYSICAL EDUCATION •

(PK-12 Certification)

#### POLITICAL SCIENCE ◆

#### PRE-PROFESSIONAL PROGRAMS

Dental

Engineering

Law

Medical

Pharmacy

Physical Therapy

Seminary

Veterinary

#### PSYCHOLOGY ◆

### SOCIAL STUDIES EDUCATION •

(9-12 Certification)

#### SOCIAL WORK ◆

#### SOCIOLOGY ◆

Anthropology ◆

Criminology ◆

Social Inequalities

#### SPECIAL EDUCATION

(PK-12 Certification)

Multi-categorical with add-on in severe disabilities

#### SPORT MANAGEMENT

#### THEATRE ◆ •

Design/Technical

Musical Theatre

Performance

Teacher Certification (PK-12)

#### UNIVERSITY STUDIES/UNDECLARED

## Options to Take You Far

### FIFTH-YEAR M.B.A. PROGRAM

Major in any Bachelor of Arts degree program, minor in professional business, and you could earn your M.B.A. in your fifth year.

### FIFTH-YEAR M.A.T. PROGRAM

Earn a degree marked with a garnet circle • on the right, and you may complete requirements for teacher certification and a master's degree in your fifth year.

### NON-TRADITIONAL SCHEDULING AND THREE-YEAR OPTIONS

With flexible scheduling options and select three-year programs, there are options for completing your degree faster.

◆ Indicates minor available

PK Indicates pre-kindergarten

K Indicates kindergarten

• Indicates fifth year M.A.T. program options

❖ Applied software is only available to transfer students who have earned an associate's degree in computer programming from a South Carolina Technical College





### **Directory of Departments:**

Admissions 803/323-2191 [www.winthrop.edu/admissions](http://www.winthrop.edu/admissions)

Athletics 803/323-2129 [www.winthropeagles.com](http://www.winthropeagles.com)

Accessibility 803/323-2206 [www.winthrop.edu/hcs/about-accessibility.aspx](http://www.winthrop.edu/hcs/about-accessibility.aspx)

Financial Aid 803/323-2189 [www.winthrop.edu/finaid](http://www.winthrop.edu/finaid)

Health Services 803/323-3332 [www.winthrop.edu/hcs](http://www.winthrop.edu/hcs)

Honors Program 803/323-2320 [www.winthrop.edu/honors](http://www.winthrop.edu/honors)

New Student and Family Programs 803/323-2387 [www.winthrop.edu/orientation](http://www.winthrop.edu/orientation)

Records and Registration 803/323-2194 [www.winthrop.edu/recandreg/](http://www.winthrop.edu/recandreg/)

Residence Life 803/323-2223 [www.winthrop.edu/reslife](http://www.winthrop.edu/reslife)

### **College Directory**

College of Arts and Sciences Academic Student Services 803/323-2183 [www.winthrop.edu/cas](http://www.winthrop.edu/cas)

College of Business Administration Academic Student Services 803/323-4833 [www.winthrop.edu/cba](http://www.winthrop.edu/cba)

Richard W. Riley College of Education Academic Student Services 803/323-4750 [www.winthrop.edu/coe](http://www.winthrop.edu/coe)

College of Visual and Performing Arts 803/323-2465 [www.winthrop.edu/cvpa](http://www.winthrop.edu/cvpa)

University College Academic Advising 803/323-4784 [www.winthrop.edu/ucadvising](http://www.winthrop.edu/ucadvising)



## Helpful Links

Academic Catalog [www.winthrop.edu/recandreg/undergraduate-catalogs.aspx](http://www.winthrop.edu/recandreg/undergraduate-catalogs.aspx)

Academic Calendar [www.winthrop.edu/uploadedFiles/acadschedule/5yrcalendar.pdf](http://www.winthrop.edu/uploadedFiles/acadschedule/5yrcalendar.pdf)

Admissions Counselor Information [www.winthrop.edu/admissions/winthrop-admissions-staff.aspx](http://www.winthrop.edu/admissions/winthrop-admissions-staff.aspx)

Application Status [apply.winthrop.edu/status](http://apply.winthrop.edu/status)

Apply to WU [apply.winthrop.edu/apply](http://apply.winthrop.edu/apply)

Campus Visit Opportunities [www.winthrop.edu/admissions/visit](http://www.winthrop.edu/admissions/visit)

Graduate Programs [www.winthrop.edu/graduateschool](http://www.winthrop.edu/graduateschool)

Scholarships [www.winthrop.edu/finaid/scholarship-guidelines.aspx](http://www.winthrop.edu/finaid/scholarship-guidelines.aspx)

Student Life [www.winthrop.edu/student-affairs](http://www.winthrop.edu/student-affairs)



## Connect with Us!

[www.facebook.com/winthropuniversity](http://www.facebook.com/winthropuniversity)

[www.twitter.com/winthropu](http://www.twitter.com/winthropu)

[www.youtube.com/winthropuniversity](http://www.youtube.com/winthropuniversity)

[instagram.com/winthropu](http://instagram.com/winthropu)

[instagram.com/winthropadmissions](http://instagram.com/winthropadmissions)

